



trase

Porto velho

COMMODITY YEAR COUNTRY BIOME
Beef 2017 Brazil Amazonia

PASTURE AREA
893,323.2 ha

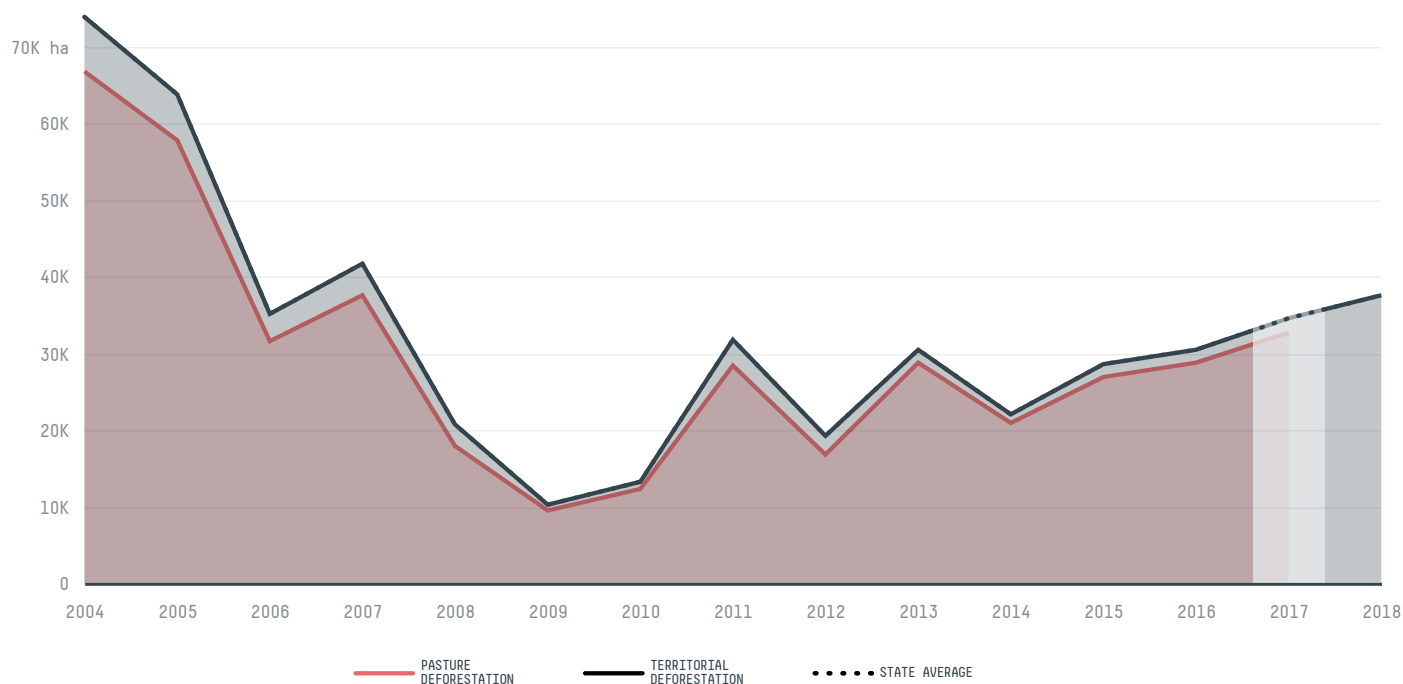
The largest exporter of beef in Porto Velho was Jbs, which accounted for 41.9% of the total exports, and the main destination was China (Hong Kong).

AGRICULTURAL INDICATORS	SCORE
Pasture area	893,323.2 ha

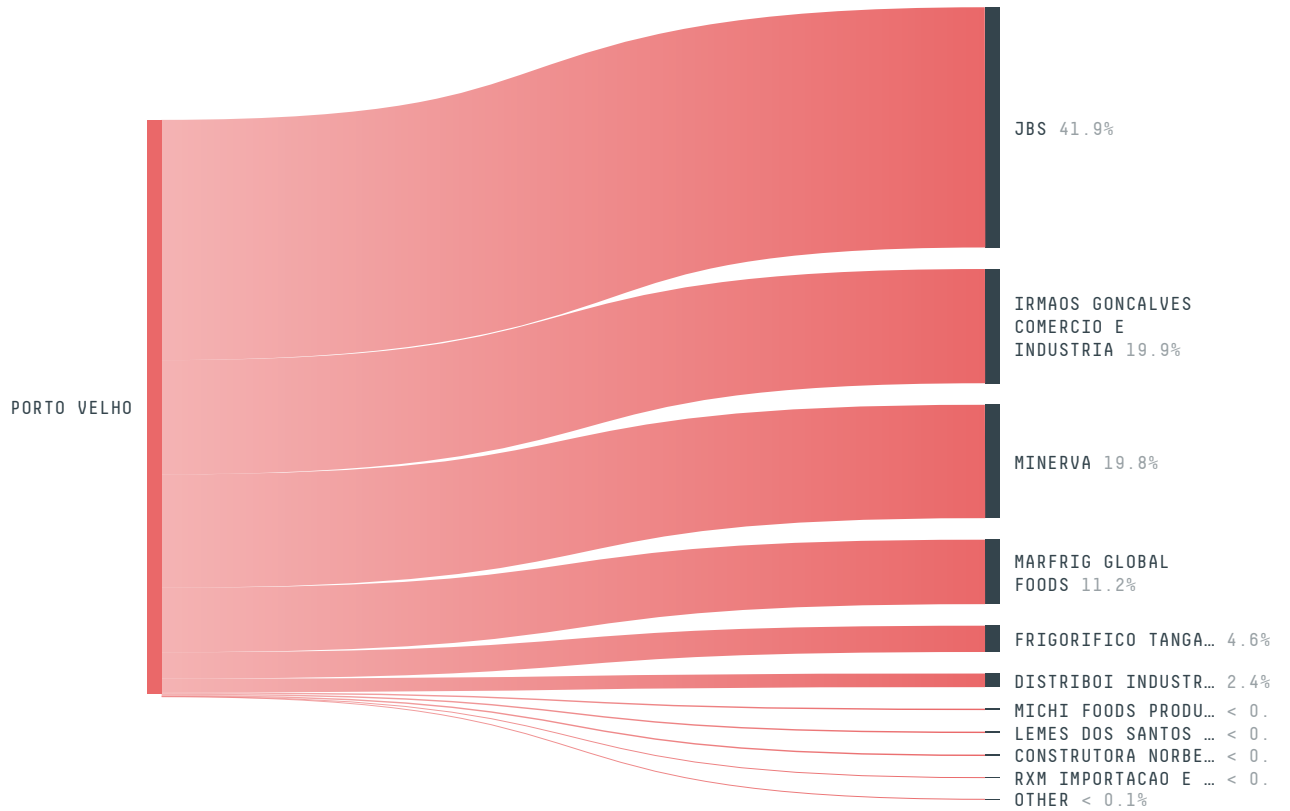
ENVIRONMENTAL INDICATORS	SCORE
Pasture deforestation	32,662.1 ha
Cattle deforestation per tonne	0.6 ha/t
Territorial deforestation	34,614 ha
Land-based CO2 emissions	17,991,453.1 t CO2
Water scarcity	2 /7
CO2 emissions from pasture deforestation	17,018,219.1 t CO2

SOCIO-ECONOMIC INDICATORS	SCORE
GDP per capita	- USD/capita
GDP from agriculture	- %
Human Development Index	0.736 /1
Smallholder dominance	49 %
Reported cases of forced labour	1
Reported cases of land conflicts	9
Population	484,992
TERRITORIAL GOVERNANCE	SCORE
Legal Reserve deficit	12,053.3 ha
Legal Reserve deficit as a % of private land	0.8 %
Protected vegetation in private land	1,016,007.1 ha
Unprotected vegetation in private land	83,324.4 ha
Number of environmental embargoes	333
ACTOR COMMITMENTS	SCORE

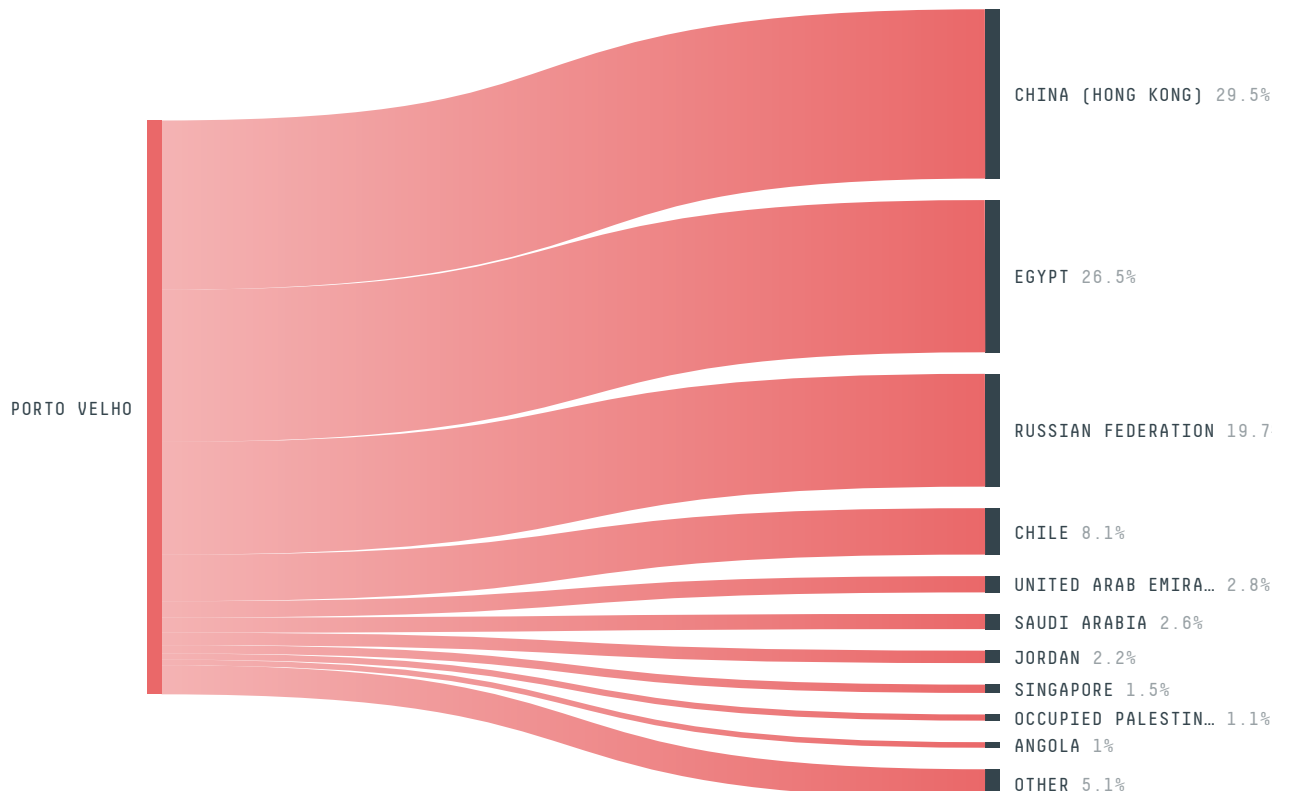
DEFORESTATION TRAJECTORY OF PORTO VELHO



TOP TRADERS OF BEEF IN PORTO VELHO IN 2017



TOP IMPORTING COUNTRIES OF BEEF FROM PORTO VELHO IN 2017




Trase is a partnership between

 Stockholm Environment Institute

 Global Canopy Programme

In collaboration with

 vizzuality

 The European Forest Institute

and many other organizations and individuals.

Donors

 The Global Environment Facility

 WWF

 Europe

 Gordon and Betty Moore Foundation

 The Nature Conservancy

 Department for International Development

 Formas

 Norway's International Climate and Forest Initiative (NICFI)

[Terms of Use](#) · [Privacy policy](#) · [Cookie policy](#) · [Contact us](#)